



JURY EVALUATION

Saxophone Audition #1

For Promotion from Level A to Level B

Please Print \_\_\_\_\_ Date \_\_\_\_\_

Student \_\_\_\_\_ Student ID # \_\_\_\_\_

Private Teacher \_\_\_\_\_ Class Teacher \_\_\_\_\_  
(if applicable)

**SCALES AND ARPEGGIOS (one octave)**

C Major : comments \_\_\_\_\_ Rating \_\_\_\_\_

G Major : comments \_\_\_\_\_ Rating \_\_\_\_\_

D Major : comments \_\_\_\_\_ Rating \_\_\_\_\_

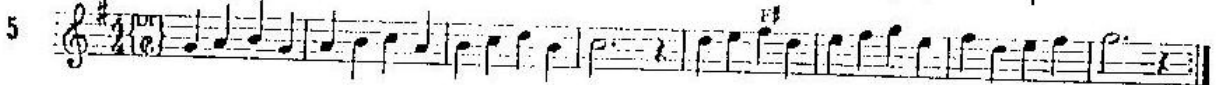
**CHROMATICS**



Chromatics Comments: \_\_\_\_\_

\_\_\_\_\_ Rating: \_\_\_\_\_

**TECHNICAL STUDIES (judges choose one line from each group of three)**



Number \_\_\_\_\_ Comments: \_\_\_\_\_

\_\_\_\_\_ Rating: \_\_\_\_\_

6  Musical notation for exercise 6, measures 6-8. It consists of three staves of music in 4/4 time, featuring eighth and sixteenth notes with various accidentals.

Number \_\_\_\_\_ Comments: \_\_\_\_\_

Rating: \_\_\_\_\_

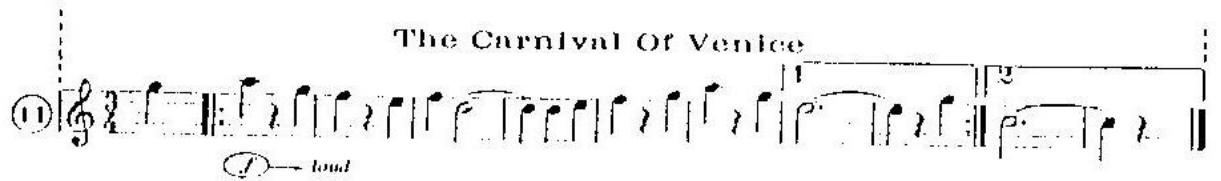
16  Musical notation for exercise 16, measures 16-18. It consists of three staves of music in 4/4 time with a key signature of one sharp (F#). Chord symbols C# and F# are indicated above the notes.

Number \_\_\_\_\_ Comments: \_\_\_\_\_

Rating: \_\_\_\_\_

**ETUDES (judges choose one number from each group of two)**

⑩  Musical notation for exercise 10, a single staff in 4/4 time with a key signature of one sharp (F#).

**The Carnival Of Venice**  
 ⑪  Musical notation for exercise 11, a single staff in 3/4 time with a key signature of one sharp (F#). It includes a dynamic marking *(P) → loud*.

Number \_\_\_\_\_ Comments: \_\_\_\_\_

Rating: \_\_\_\_\_

The Top Notes below make a familiar tune. What is it?

Number \_\_\_\_\_ Comments: \_\_\_\_\_

Rating: \_\_\_\_\_

**SOLO**

**Minuet**

Alto Sax Solo

J. FOX  
Arr. by Sigurd Rascher

Tempo di Minuetto

The note C<sub>5</sub> when marked  should be fingered like low C<sub>5</sub>, but with the Octave Key added.

Solo Comments: \_\_\_\_\_

Rating: \_\_\_\_\_

**OVERALL PERFORMANCE**

Tone Comments: \_\_\_\_\_

Rating: \_\_\_\_\_

Breathing Comments: \_\_\_\_\_

Rating: \_\_\_\_\_

Embouchure Comments: \_\_\_\_\_

Rating: \_\_\_\_\_

Articulation Comments: \_\_\_\_\_

Rating: \_\_\_\_\_

Hand Position Comments: \_\_\_\_\_

Rating: \_\_\_\_\_

Posture Comments: \_\_\_\_\_

Rating: \_\_\_\_\_

Rhythm Comments: \_\_\_\_\_

Rating: \_\_\_\_\_

Key: + = Outstanding  
S = Satisfactory  
- = Needs Improvement

Judge \_\_\_\_\_  
(name)

All grades must be S, S-, S+ or + for advancement

Comments (attach additional pages if necessary):